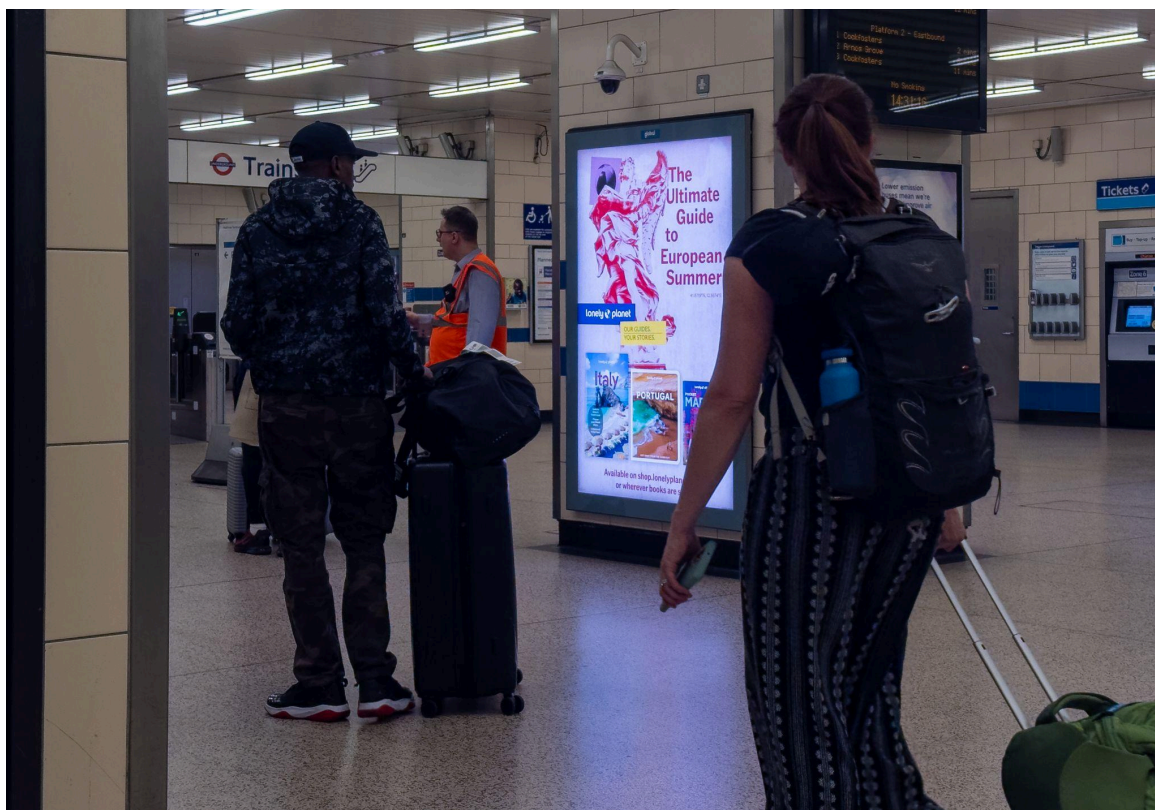


Tube Paper 6 Sheet - Artwork Specification



Artwork Specifications

Display Area: 1,750mm x 1,150mm
Overall Size: 1,800mm x 1,200mm
Bleed: 2.5mm all around

File Format: High Res CMYK PDF (Embed/outline images and fonts)
File Size: Up to 25MB
File Name: SiteType_LiveDate_CampaignName
DPI: 300 dpi minimum

Compliance & Approvals

All artwork is subjected to approval.
Please send all completed artwork to artwork@exciteooh.com.

If you have any concerns when preparing your copy, the Committee of Advertising Practice (CAP) Copy Advice team offers free, fast and confidential advice. It's available over the telephone, 020 7492 2100, or via the ASA and CAP website at www.asa.org.uk.